

Cerrejon Foundation for Water in la Guajira – CFWG  
Summary of activities for June 2010

During the month of June 2010, the Cerrejon Foundation for Water in la Guajira conducted actions in the following work fronts:

- ✓ Repairing two windmills located in the experimental farm and in the Youleput community.
- ✓ Integration of information on windmills along the railway line into Corpoguajira's Geographic Information System.
- ✓ Checking tank water quality delivered to 20 communities in Upper Guajira.
- ✓ A pre-diagnostic visit to the Patsuarali community in Albania.
- ✓ Writing the water component of the intervention plan for Maicao's Jatkusirra community.
- ✓ Starting geo-electric studies for groundwater extraction in four communities and TechnoCerrejon project
- ✓ Participation in the workshop seminar: public-private alliances in food safety in Colombia.
- ✓ Content development for the English version of the CWFG web portal.

***Line 1: Water supply solutions***

**Repairing windmills**

In the month of June, two windmills located along Cerrejon's railway line were repaired. One of the communities benefiting from this action was the Youleput community, located at kilometre 42 along the railway line and belonging to the municipality of Maicao.

The recommendations of the contractor who repaired the windmills refer to washing the well, changing the cylinder and within 10 months taking down the motor for an extremely low oil leakage that currently has the bearing.

Another windmill repaired was the one located in the Experimental Farm. This windmills had various failures which were putting at risk the stability of the windmill itself. Timely notice by Cerrejon Aboriginal Foundation, as well as the early response by CWFG and the contractor, Mr. Tomas Escamila, prevented further damage to this structure allowing the mill to operate again in just one week.



Image #1: Signing off the delivery of the repaired mill in Youleput.

### Regional system of windmill information

On June 25, at the meeting held with Corpoguajira engineer Leonel Inciarte, it could be verified that the data collected by the CWFG and uploaded to the SISMOV application were available on Corpoguajira intranet allowing a better tracking of the windmills inventory. At the moment, we are working on the remote access feature to enable the Water Foundation to upload and modify data remotely.

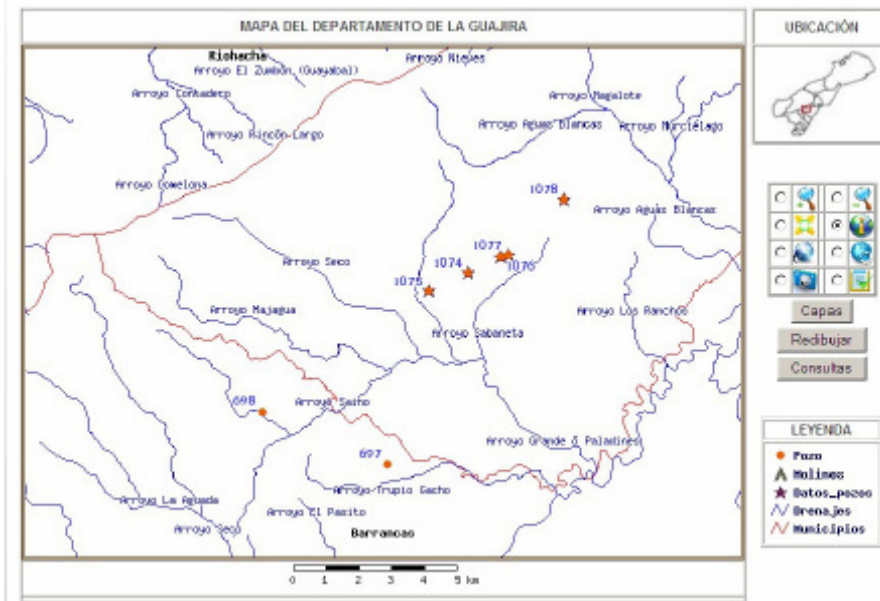


Image #2: Paladines area map in Corpoguajira GIS.

### Delivery of water storage tanks and water quality analysis

Responding to the need for water supply of the Upper Guajira communities affected by the drought, the CWFG, along with Cerrejon Social Management and Cerrejon Protection Divisions, donated 20 tanks for drinking water storage to an equal number of families.

Before the delivery, the CWFG monitored water quality analysing the quality of water in a representative sample of the 20 tanks given out to an equal number of Upper Guajira aboriginal families.

On the suggestion of Mr. Luis Martinez, Head of Cerrejon's environmental lab, five (5) parameters were chosen to be analyzed: conductivity, chlorides, sulphates, nitrates and pH. suggested. His suggestion was based on the fact that the polymer contained in the tanks had high levels of them. The samples were analyzed first in the field and then in the environmental lab.

The results obtained allowed us to give viability to the delivery of the tanks. It was found that after washing them three times and steam drying them, they were suitable for delivery. All the parameters analysed were within the allowable range established by Resolution 2115/2007 (drinking water quality).

With the provision of these tanks, holding up to 1.200 litres of water each, it is hoped to improve water supply systems in the rural communities and also to dispense with long walks in search and transport of water.

With this, the CWFG continues involving itself with the different initiatives undertaken at the departmental level to improve the storage systems and to address the water shortage for those whose access to the resource water becomes today more than ever, a matter of survival.



**Image #3: Tanks chosen for quality analysis – Puerto Bolivar.**

**Conducting geo-electric studies for groundwater exploration**

In the framework of the Alliance between the Company Llano Pozos and the CWFG, in June was carried out the contracting of the firm in charge of making hydro geologic assessment and geoelectric prospecting for the location of four underground water wells in the municipalities of Cerrejon influence zone. The four places chosen for these studies were: Jirijitpana (Uribe), HirtuKattolumana (Manauare), Jatkusirra (Maicao) and Pesuapa (Maicao).

At the same time, as technical support to TechnoCerrejon, geo- electric studies were conducted at the site where facilities for this project will be built. The CWFG was charged with making the co-ordination of studies and then auditing them as well. On June 29<sup>th</sup>, field work was started and the final report is to be ready in the second week of July.



Image #4: Geo-electric studies. Field phase in Hatonuevo.

#### **Formulation of the Jatkusirra community intervention plan. Water component.**

During the month of June, CWFG carried out a field inspection and also held meetings with community leaders of Katkusirra, in order to write down an intervention plan for this community to significantly improve their water access, storage and use conditions.

CWFG technical team conducted field analysis and presented an intervention proposal that includes: a) a deep well drilling and installation of a windmill, b) Construction of an elevated tank with enough capacity to meet the needs of current and future population over a 15 year period, and c) Construction of a trough for animal consumption.

The technical and economic proposal will be presented for discussion and approval in the first week of July to Cerrejon Social Management Division.



Image #5: Collecting field data in the Jatkusirra jaguey

### **Pre-diagnostic visit to the Patsuarali community**

On June 18<sup>th</sup>, CWFG staff and employees from Cerrejon's Mining Expansion Office paid an acknowledgement visit to the aboriginal community of Patsuarali, located in the municipality of Albania. This visit was made in response to a request by Cerrejon Mining Expansion Support Group, who had received a support application from the community and expressed its interest in supporting them improve their water supply conditions

Aspects of the information gathered during the visit are summarized below:

### **Patsuarali community**

The Patsuarali community is part of an area known as Warewaren, municipality of Albania. It is located on the left side of the road from Albania to Cuatro Vias, between kilometres 26 to 28. The community consists of 120 persons in 20 households.

According to data supplied by the leader of the community, it has a total of 1850 livestock (cattle, goats, pigs, horses and donkeys), which must be taken daily, to the Rancheria river to drink. The river is a 30 minute walk.

During the visit we found that the existing windmill has been out of service for two years and the jagueye they count on was poorly built so that the water retention time does not exceed two months. In turn, they have an artesian well with good water quality, according to parameters analyzed by the Foundation.

The community requested the construction of a new well, installing a windmill, the construction of a reservoir and a trough, and the installation of waterpipes to each of the households. A feasibility study

of this request will be analyzed and evaluated by the CWFG and GAEM to intervene in the second half of 2010.

### **Socio-cultural characterization of La Gran Via reservoir, Bahia Honda.**

A team of five professionals, lead by Olma Alvarez, Project Manager sustainability of four reservoirs in Upper Guajira, is working on writing down the socio-cultural characterization of La Gran Via reservoir, located in Bahia Honda.

To date, contact has been established with various actors in the process, identifying 26 user communities benefiting from the reservoir. This exercise has required working closely with traditional authorities to whom the project intervention strategy was presented. We listened to their comments, we visited the reservoir with the communities and we inquired about the operation of the auditing visits (veedurias) of the reservoir.

It is worth noting the high degree of acceptance of the reservoir and the high expectations vis-a-vis getting the water treatment plant that will distribute healthy water to start working. However, they expressed their concern over various technical issues. These concerns were forwarded to the Management of the Departmental Water Plan, which is acting as projects controller.

### ***Line 2: Sanitation and hygiene solutions***

#### **Handwashing day at Kamusuchiwo>u**

The CWFG supported the hygiene, training and recreation day led by the Social Management Division of the Social Responsibility Department, which was held at the ethno educational institution Kamusuchiwo>u, Media Luna community, located close to Puerto Bolivar. This event helped to continue working with kids on good hygiene habits such as washing hands correctly and in general the benefits that personal care and hygiene have on one's health. They were also taught actions that are important to prevent diarrhoeal and respiratory diseases, which are of high incidence in the region, where the child population is usually the most affected. This event complements the work that the Foundation has been carrying out in this institution with the SODIS Solar Disinfection System and the design of the school health system. This project is underway hand in hand with CINARA.

### ***Line 3: Integrated Management of Water Sources***

#### **Mapping of the Paladines Microwatershed**

In addition to the formulation of integrated thematic projects that will be advancing starting the second half of the year, the CWFG Paladines work team managed to gather information to develop and update the mapping of the microwatershed.

- ✓ Drainage network
- ✓ Production systems
- ✓ Landscape units
- ✓ Project Implementation sites

The resulting maps become very valuable tool for territorial planning and defining priority areas for intervention.

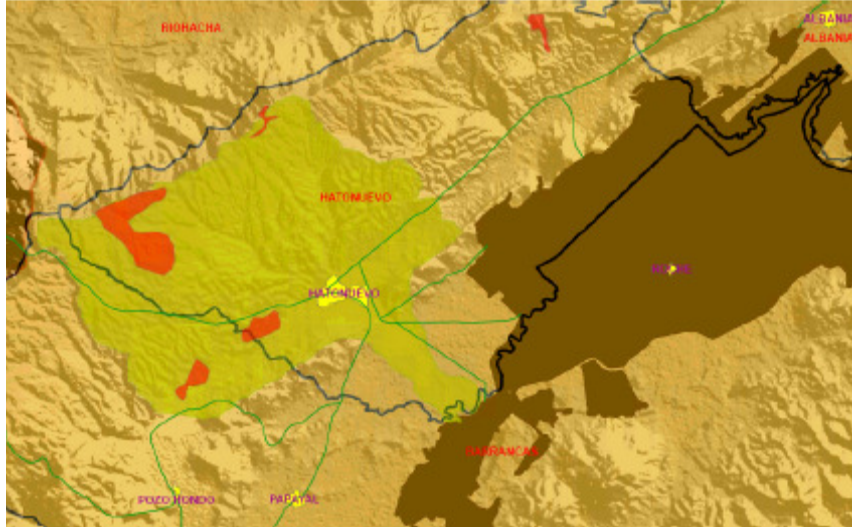


Image #6: Image of the Paladines Creek Microwatershed, workstations and location in relation to the mining areas.

### ***Transversal activities to the lines of work***

In the month of June, began the translation of content for the English version of the webportal. To date, the strategic framework of the Foundation (mission, vision, values) is online, as well as the description of the lines of work and a summary of the actions taken in the areas of influence along the railway line.

The information can be viewed at the following link:

[http://www.fundacionescerrejon.org/secciones/FUNDCERRE/ENGLISHHOME/FUNDACIONES/AQUA/QS/seccion\\_HTML.jsp](http://www.fundacionescerrejon.org/secciones/FUNDCERRE/ENGLISHHOME/FUNDACIONES/AQUA/QS/seccion_HTML.jsp)

### **Cerrejon Water Foundation participation in the workshop Seminar on Partnerships in Food Security and nutrition.**

On June 24<sup>th</sup>, Social Action, together with the PAN network, the FAO and the Ministry of Social Protection and ANDI's Food Chamber conducted a Workshop Seminar "Public-private Partnerships in Food Security and Nutrition in Colombia"

On behalf of the Cerrejon Foundations System, the Cerrejon Water Foundation in la Guajira outlined the main achievements and challenges of the partnership with Social Action and the United Nations World Food Programme through a talk which was preceded by Sandra Alzate, Director of International Cooperation for Social Action and was also attended by Praveen Agrawal, WFP Representative in Colombia. The event was broadcasted live via the NutriNet webportal

<http://www.colombianutrinet.org>.

More information:

Paula Pena Amaya

Executive Director

[paula.pena@cerrejon.com](mailto:paula.pena@cerrejon.com)

John Serna Carmona

Coordinator of the following lines of work: Water supply solutions and Integrated Management of water sources.

[john.serna@cerrejon.com](mailto:john.serna@cerrejon.com)

Olma Alvarez Zapata

Adviser for water supply solutions. Coordinator of the following lines of work: water supply solutions; sanitation and hygiene and training.

[olma.alvarez@cerrejon.com](mailto:olma.alvarez@cerrejon.com)

**Cerrejon Water Foundation in la Guajira**

Carrera 2 N° 7-54 Riohacha – La Guajira

Complejo Minero Cerrejón, Albania – La Guajira

Calle 100 N° 19A – 10 Bogotá D.C.

Tels: (5) 350 6084 / (1) 595 2441

[www.fundacionescerrejon.org](http://www.fundacionescerrejon.org)